

Check the product label for actual catalog number, lot and expiry date.

CozyXS™ Prestained Protein Ladder

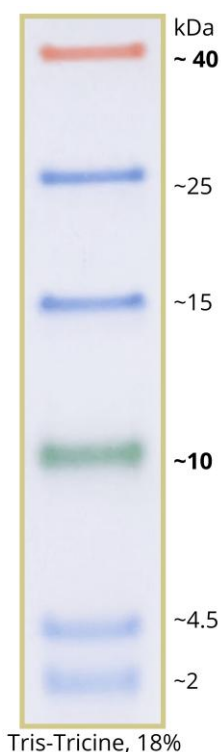
CAT.#	SIZE	COMPONENTS	COMPONENT COMPOSITION
PRL0401	50 appl.	0.25 ml - CozyXS™ Prestained Protein Ladder	Ready to load low-range protein ladder. It contains highly purified prestained proteins, supplied denatured in 20 mM Tris-Phosphate (pH 7.5 at 25°C), containing SDS, Urea and DMSO.

APPLICATIONS

- Approximate protein molecular weight determination on denaturing gels and Western Blots
- Monitoring of electrophoresis process and transfer efficiency

BENEFITS

- Low-range protein ladder with 3-color bands from 2 to 40 kDa
- Room-temperature-stable ladder, always ready to be used
- Sharp bands, bright colors
- Great for Western blots



CozyXS™ Prestained Protein Ladder

2 - 40 kDa Range

10 (green) , 40 (red) kDa references

6 Bands

0.1-0.4 µg/µl concentration of each protein

Ready-to-use

PROTOCOL

Do not heat, just thaw (if needed) and mix.

Load: 3- 5 µl/ gel well for electrophoresis

Load: 3- 5 µl/ gel well for Western transfers

Gels:

The ladder is separated well on 14 to 18% Tris-Tricine gels.

- Use 29:1 or 37.5:1 acrylamide to bisacrilamyde ratio.
- To separate low MW proteins on Tris-Glycine gels:
- Use 15% acrylamide gel for separating small proteins
- If >15% gels are necessary, keep stacking gel layer thin (<5 mm)
- Use special gel loading tips to accurately load samples at the well bottom.
- For better stacking of small proteins, run electrophoresis at 100V for 15 min. followed by 150V for 60 minutes.

For Western transfer, use 100 V, for 90 minutes.

- For small proteins, use rather NC membranes with small pores (0.2 µm).
- Transfer Buffer: 25 mM Tris, 192 mM glycine, 25% methanol.
- Avoid SDS in transfer buffer and use methanol concentration up to 25% for better binding. Alternatively, take ethanol for binding of small proteins.
- After transfer, rinse the membrane with distilled water and proceed with blocking, washing, and incubation at 4°C.
- If further immobilization of small peptides on membrane is required, dry membranes at room temperature before blocking.
- Use Tween-20 at < 0.1% in washing and blocking buffers.

STORE

Room temp., short term (2 weeks)

+4°C, 3 months

-20°C, 12 months

Storage recommendations are just guidelines; the expiry date shall be followed.

Note:

The picture shows just guidelines for approximate protein MW estimation.

The apparent MW of each protein was determined by callibrating it against unstained protein of same size. For more precise sizing, such calibration shall be done exactly at conditions used.

IN VITRO RESEARCH USE ONLY

ORDERING

T: +49 7250 33 13 401

F: +49 7250 33 11 413

order@highQu.com

www.highQu.com

SALES

T: +49 7250 33 13 401

F: +49 7250 33 11 413

sales@highQu.com

TECHNICAL SUPPORT

T: +49 7250 33 13 401

F: +49 7250 33 11 413

tech-support@highQu.com